



FRCs/Family Support Organizations in a Child and Family Well-Being Network

Jenny Pearlman, Chief Policy Officer, Safe & Sound

Child Welfare Policy Roundtable| December 6, 2024

Transformation: Child and Family Well-Being Network

- **Traditional**
 - Response after harm has already occurred
 - Safety achieved through deterrence through force or threat of force
- **Developing**
 - Narrow front door to child welfare: work upstream and reform mandated reporting
 - Build continuum of prevention services that are cross-system, anti-racist and trauma-informed
- **Reimagined**
 - Public wellness and safety achieved through connection, centering community, and more equitable distribution of resources

What is a Family Resource Center or Family Support Organization?



**Family Centered
&
Strengths-Based**

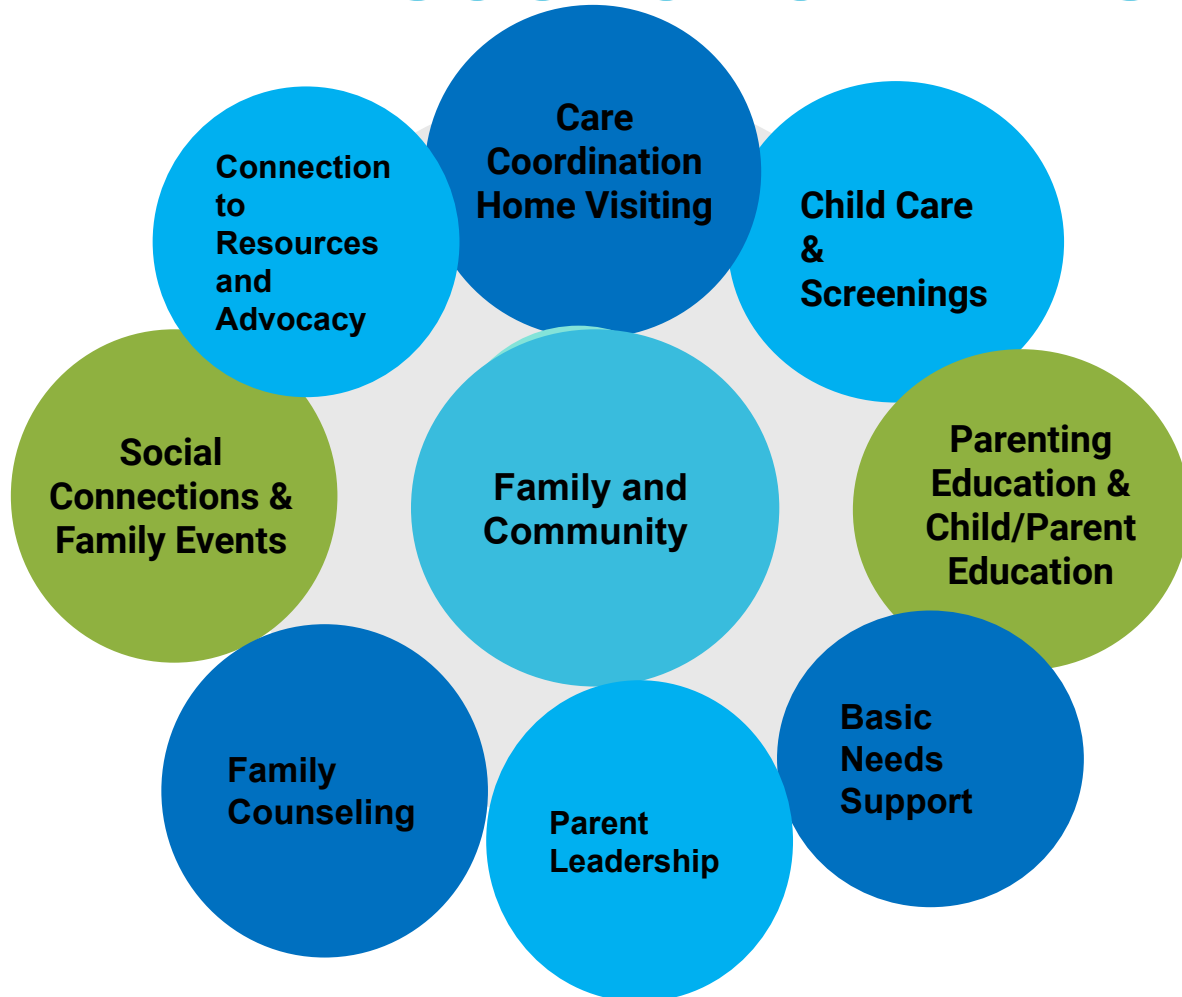
**Imbedded in
Community &
Providing
Holistic
Supports**

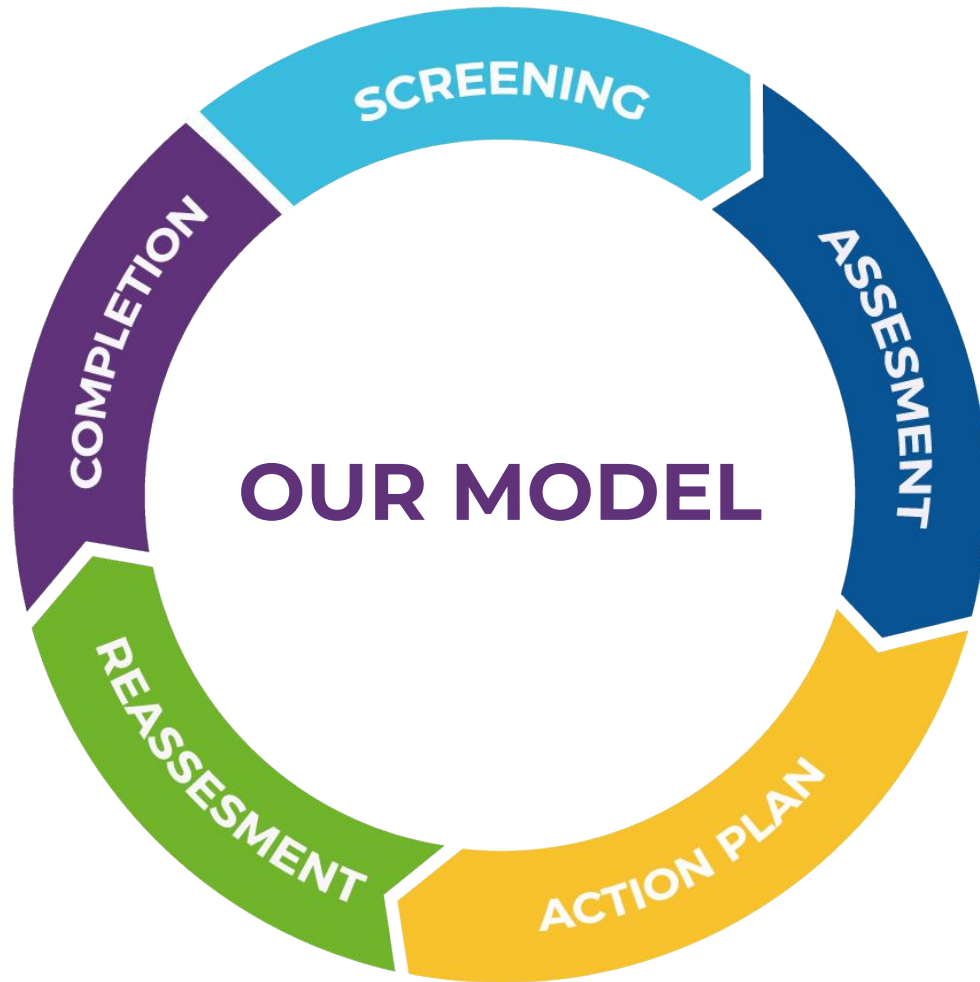
**Responsive to
Community
Needs**

Strengthening Families Framework: Five Protective Factors

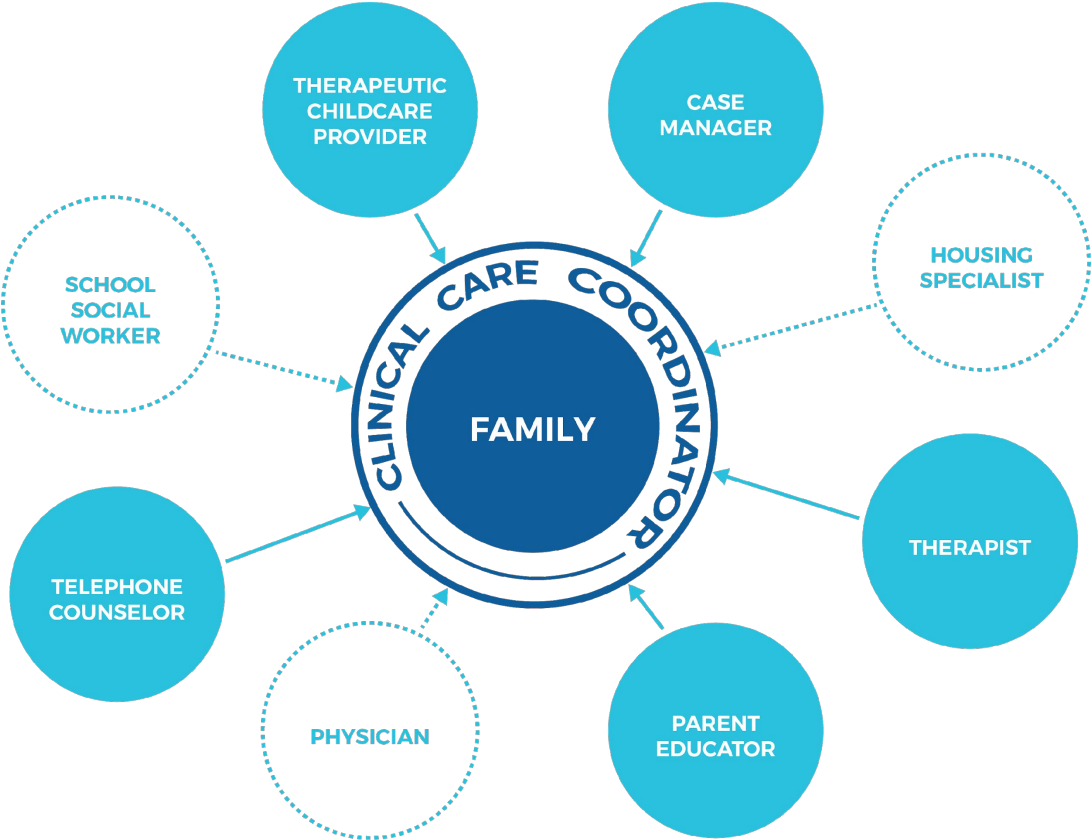
- **Background**
 - Center for Study of Social Policy (2001); research-informed
 - Focus on building strengths vs. eliminating risks
 - Low rates of child abuse where 5PF high
- **Five Protective Factors**
 - Parental Resilience
 - Social Connections
 - Knowledge of Parenting and Child Development⁴
 - Concrete Support in Times of Need
 - Social & Emotional Competence of Children

FAMILY RESOURCE CENTERS





COORDINATING CARE & SUPPORT



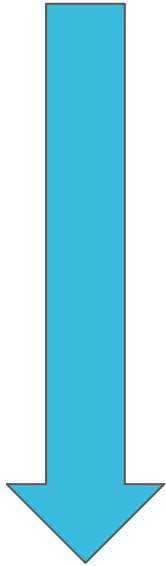
Coalitions/ Networks of Family Support Organizations

Family Services Alliance:

- 40+ orgs.
- Over 40,000 served
- <https://sffamilyservicesalliance.org/>

- **Coordination of Services & connection to other family-serving systems**
 - Break silos and build bridges to meet families' needs and ensure access
 - Leverage and maximize public benefits
 - Create more seamless and trauma-informed access for families
- **Building capacity**
 - Training and technical assistance
 - Public and private funding
- **Joint advocacy for needs of families and children**

Strengthening Families: Child Abuse Reduction



- 60% reduction in substantiated cases of abuse and neglect since FRC Initiative created in 2009 (San Francisco)
- 26% lower rate of child abuse investigations in neighborhoods with Family Support Orgs. (Allegheny, PA)
- 63% reduction in abuse since moving to differential response model with FRCs (Teller County, CO)

Univ. of Chicago Chapin Hall. (2015). Do Family Support Centers Reduce Child Maltreatment Investigations? Evidence from Allegheny County. Family & Children's Services, County of San Francisco Data; Omni Institute (2021). Return on Investment of a Family Resource Center to the Child Welfare System; Andrew Russo presentation National Family Support, April 2022.

Increased Economic Supports Yields Decreased Child Welfare Involvement

Child Welfare Interventions Augmented with Concrete Supports

- Differential Response
- Family Preservation

Concrete Supports

- Medicaid
- Supportive Housing
- Paid Family Leave
- Child Care
- SNAP & WIC
- Legal Supports

Economic Supports

- Minimum Wage Increase
- Employment
- Earned Income Tax Credit (EITC)
- State Welfare Benefits
- Child Support
- Sustained Income Support



Chapin Hall at the University of Chicago, 2021 (citing sources), available at: <https://www.chapinhall.org/research/economic-supports-child-welfare/>

CHILD ABUSE COSTS:

- \$16.5 Billion Total Economic Burden in CA in 2023

Interactive Cost Calculator

County / Region Snapshot

**The Economics of Abuse Report:
A Study of San Luis Obispo County**

Child maltreatment is a persistent problem within San Luis Obispo County. Although it is a hidden social ill, its impact is significant. Child maltreatment impacts not just the child, but the family, the community, and society at large. In California, as many as one out of every 19 children is suspected of being maltreated. The impact of maltreatment not only morally degrades our society, it significantly hurts our economy. In fact, the physical, mental, and emotional effects of maltreatment persist long after child maltreatment occurs, and result in ongoing costs to every sector of California.

Child maltreatment is a core underlying factor in many of California's ongoing struggles, such as high rates of school dropout, homelessness, incarceration, and chronic health issues. This report shines a light on this largely ignored issue, with a specific focus in your county, and the negative impact it has on all of us.

The Financial Impacts of Child Abuse

The cumulative financial impact to San Luis Obispo County for the 549 verified survivors of maltreatment and 2 maltreatment fatalities in 2017 is **\$202,000,000**. Though these costs are accrued over the course of the victim's life, the community will continue to occur the same cost each year until we are able to reduce and ultimately end child abuse.

Category	Cost
HEALTHCARE	\$49,439,163
LIFETIME PRODUCTIVITY	\$100,332,262
EDUCATION	\$8,416,216
FATALITY	\$3,156,234
CHILD WELFARE	\$35,990,085
CRIMINAL JUSTICE	\$4,296,252

This report was created in partnership with Berkeley and SAFE & SOUND.

PREVENTION PAYS.

Research suggests that expanding prevention programs provides benefits to society and **significant returns on investment.**

- Family Resource Centers: For every \$1 spent, between \$2.92¹ - \$4.70² saved depending on jurisdiction
- Home Visiting Programs: \$5.70³ for every \$1 spent
- Parenting Education: \$16.84⁴ for every \$1 spent

Increasing Investment in Community Supports

- **Why Invest in Family Support Organizations?**
 - Increase protective factors, building family strengths
 - Reduce child maltreatment
 - Provide return on investment
- **State Opportunities**
 - State FFPS Advisory Committee
 - State Community Pathway Advisory Committee
 - Governor's Annual Budget
- **County Opportunities**
 - Local FRC Collaboratives & Partnerships
 - FRCs in county legislation and initiatives
 - FFPSA comprehensive prevention planning